

Datasheets

Stand I model 6-2/1, 10-2/1 - castors



Articlenumber

60.31.102

Description

The stand ensures safe installation of the iCombi Pro and iCombi Classic 6-2/1 and 10-2/1. The cooking system can be fixed on the stand using a mounting kit.

Intended use

This product is intended exclusively for professional use, such as in restaurant kitchens or catering operations for schools, hospitals, or delis. Any other use runs counter to its intended purpose, and could be dangerous. RATIONAL AG assumes no liability for consequences of improper use.

Features

- Mounting kit for fixing the cooking system on the base frame
- Securing the containers against slipping
- Open on all sides
- 4 height-adjustable castors (of which 2 are lockable)

Technical specifications

Clearance from floor panel to floor:	180 mm
Max. fixed power:	600 kg

Dimensions and weights

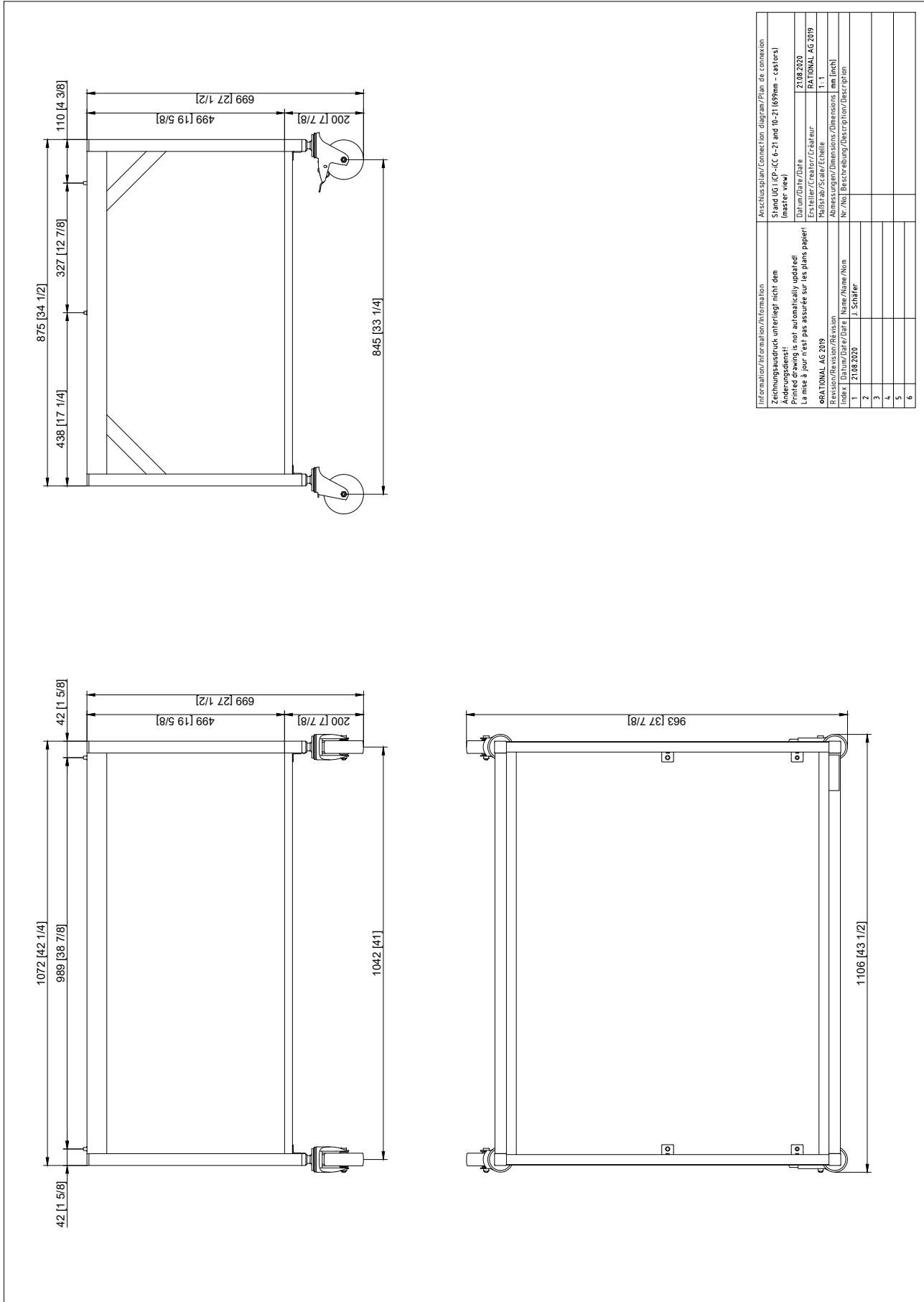
Width (W):	1.106 mm
Height (H):	699 mm
Depth (D):	963 mm
Weight:	27,9 kg

Material

Rust-free stainless steel (CNS 1.4301/AISI 304)

Datasheets

Stand I model 6-2/1, 10-2/1 - castors



Information/Information/Information	Anschlussplan/Connection diagram/Plan de connexion
Zeichnungsdruck unterliegt nicht dem Urheberrecht Printed drawings is not automatically protected La mise à jour n'est pas assurée sur les plans papier!	Stand I (C-CC-6-2) and I6-2 (699mm - castors)
Revision/Revision/Revision	21.08.2020
Index / Datum/Date / Name/Name/Nom	RATIONAL AG 2019
1	Ersteller/Creator/Créateur
2	Abmessung/Dimensions/Dimensions
3	Nr./No. / Beschreibung/Description/Description
4	
5	
6	